



Luge

Sport Information Book

January 2021



About the Sport Information Books

Published in January 2021, the Sport Information Books aim to assist NOCs in their preparation for and participation at the Olympic Winter Games Beijing 2022.

The Sport Information Books contain all pertinent information for each sport including venue information, specific Olympic related rules, accommodation, transport, etc.

All information provided in this Information Book was correct at the time of publication in January 2021; however, please note that details may change between this date and the Games.

CONTENTS

Overview	2
Events	2
Venue	3
Gross Capacity	3
Field of Play	3
Athletes Services	3
Yanqing Olympic Village	4
Facts and Figures	4
Travel Distance	5
Transport System	6
General Rules	7
Qualification System for Luge	7
Sport Entries and Qualification	7
Doping Control	8
Competition Rules	9
Competition Management	9
Competition Format	10
Team Captains' Meetings and Draws	12
Protests	13
Competition Equipment	13
Timing and Scoring	13
Awards	14
Appendix-Maps	15
Beijing 2022 Venue and Infrastructure Layout	15
Beijing 2022 Venue and Infrastructure Layout Yanqing Zone	16
Yanqing Zone Venue Cluster Masterplan	17
Yanqing National Sliding Centre	18
Beijing 2022 Olympic Winter Games Competition Schedule Version 7	19



Overview

The Yanqing National Sliding Centre will host the Luge competitions for the Olympic Winter Games Beijing 2022 from 5 to 10 February 2022.

Training will also take place at the Yanqing National Sliding Centre beginning on 2 February 2022.

Events

4 medal events:

Men's Event (1)

·Men's Singles

Women's Event (1)

·Women's Singles

Open Event (1)

·Doubles

Mixed Event (1)

·Team Relay

Venue

Yanqing National Sliding Centre

Gross Capacity

7,500

Field of Play

	Start Altitude	Finish Altitude	Vertical Drop	Competition Length	Number of Curves
Men's Singles	1,017m	911.6 m	121m	1,582m	16
Women's Singles /Team/ Doubles	1,000m	911.6m	104m	1,475m	15

Athletes Services

The team will have access to the below areas:

- On-site luge storage zone
- Warm-up area
- Athlete lounge with free WiFi access and food and beverages services.

Yanqing Olympic Village

The Yanqing Olympic Village, developed in the form of hotel buildings, will be converted into a mountain ski resort after the Games. It is located on a 13.4-hectare plot in the Xiaohaituo area of the Yanqing district at an altitude of 918m. The village is close to the Badaling Great Wall, the Yanqing United Nations Educational, Scientific and Cultural Organization (UNESCO) Global Geopark, the National Sliding Centre and the National Alpine Ski Centre. Each apartment unit in the village has one to four beds, in addition to one to two bathrooms.

Facts and Figures

Planned Number of Residents	1,430
Athletes and sports-related Team Officials residing in this village represent the following sports/ disciplines, taking place in this Competition Zone	Luge Alpine Skiing Bobsleigh Skeleton
Housing Type	Hotel buildings (5 clusters)



Travel Distance

Distance from the Yanqing Olympic Village to:

Venue	Estimated Distance	Estimated Time
Yanqing National Sliding Centre	1km	3min
Yanqing National Alpine Skiing Centre	8km	38min
National Stadium	106km	115min
Beijing Medals Plaza	106km	114min
Yanqing Banquan Service Area	18km	22min
Yanqing High-Speed Railway Station	30km	43min
Beijing Capital International Airport	113km	107min
Beijing Daxing International Airport	178km	182min
Beijing Olympic Village	106km	115min
Zhangjiakou Olympic Village	84km	91min

Transport System

Athlete Transport System (TA)

The TA system is designed to carry athletes, team officials and their baggage and equipment. It will be in operation throughout the period of Olympic Village operation from 27 January until 23 February 2022.

The TA system includes:

- Training and competition transport services, including team sports
- Transport services for spectating athletes
- Victory Ceremony transport services for medallists
- ATO (Additional Team Official) transport services
- Cross zone transport services (service of transport connect Beijing OLV, Yanqing OLV, Zhangjiakou OLV)
- Opening/Closing Ceremony transport services
- Arrival and departure transport services

TA Service between Yanqing Olympic Village and Yanqing National Sliding Centre	
Operation Period	27 January - 23 February 2022
Estimated Distance	1 km
Estimated Travel Time	3min
Vehicle Type and Capacity	TBD

General Rules

The International Luge Federation (FIL) rules 2020 approved by the FIL Congress regarding international Luge competitions shall apply to the Olympic Winter Games Beijing 2022 Luge competitions. In the event of discrepancies between different versions, the German version should prevail (IRO Section 13, point 1).

Any issues or incidents not covered by the rules are handled as follows:

- Cases of a general nature are resolved in accordance with the Olympic Charter.
- Technical questions are resolved by the Jury or IF Delegates according to the FIL rules.

The content of this Information Book is for information purposes only and was correct at the time of publication in January 2021. In case of discrepancies with the above-mentioned Rules and Regulations, the latest Olympic Charter and FIL rules before the Games shall apply.

Qualification System for Luge

Qualification systems are the regulations defined by the IFs and approved by the IOC that consist of rules, procedures and criteria for participation in competitions of the Olympic Winter Games. Due to the potential amendments of the qualification systems, NOC should always follow the latest version of the qualification systems approved by the International Olympic Committee.

Sport Entries and Qualification

Tracking and Verification of Qualification Status

An NOC's qualification status and athlete eligibility will be tracked and verified by Beijing 2022 and the relevant IF in accordance with the Qualification System for the Olympic Winter Games Beijing 2022.

Sport Entries

Entries for the Olympic Winter Games Beijing 2022 must be submitted by NOCs through the online entries system, eSEQ. Instructions for the eSEQ system will be distributed to NOCs in advance. All entries must be submitted to Beijing 2022 by 24 January 2022 (23:59 Beijing time, GMT+8).



Conditions of Participation Forms

To be eligible for participation in the Olympic Winter Games Beijing 2022, all athletes must sign, observe, comply with and abide by the rules and regulations outlined in the Conditions of Participation Form. This form is part of the NOC registration process.

Late Athlete Replacements

All replacements requested by NOCs after the final entries deadline on 24 January 2022 (23:59 Beijing time, GMT+8), must follow the Late Athlete Replacement policy jointly developed by the IOC and Beijing 2022. Details of the policy will be included in the Accreditation and Sport Entries Manual, which will be distributed to NOCs in May 2021.

Doping Control

During the Olympic Winter Games Beijing 2022, doping control is carried out in accordance with the IOC's anti-doping rules. Urine and blood samples may be collected before and after competition.

The IOC delegates to International Testing Agency the authority and responsibilities to implement the doping control programme of the Olympic Winter Games Beijing 2022. International Testing Agency, in consultation with the FIL and Beijing 2022, determines the number of tests to be performed. Samples can be collected anytime, anywhere.

Doping control may include testing for prohibited substances and methods referred to on the World Anti-Doping Agency (WADA) prohibited list.

Competition Rules

Competition Management

The Beijing 2022's Competition Management team is responsible for organising the Luge competitions at the Olympic Winter Games Beijing 2022.

•Beijing 2022 Competition Management

Vice President

YANG Shu'an

Deputy Secretary General

HE Jianghai

Director, Sports Department

TONG Lixin

Deputy Director, Sports Department

WANG Yanxia

YANG Yang

Sport Manager, Luge

ZHANG Xudong

Deputy Sport Manager, Luge

WU Dawei

Sliding Sports Expert

Normunds Kotans

•International Luge Federation (FIL)

President

Einars Fogelis

Secretary General

Dwight Bell

IF Delegate

Claire Del Negro

Christian Eigentler



Competition Format

Timing

- At luge competitions, times are measured with an accuracy of 1/1000th second.
- Singles and Doubles: times are measured from the start to the finish light beams.
- Team Relay: the first sled starts as per Singles. The second and third sleds start from an automatic start gate that opens when the previous slider athlete hits the finish touch pad.
- Singles and Doubles events should be provided with a start time, three intermediate times and a finish time.
- The Team Relay event should be provided with a reaction time, two or three intermediate times and a finish time (touch pad).

Scoring

- The Results for Singles and Doubles are calculated by adding the times of four competition runs together for Singles, two runs together for Doubles, with the fastest total time winning.
- Results for the Team Relay are calculated by the team time taken from the first sled starting time to the third sled finishing. The fastest total time wins.

Official Training

- For Singles and Doubles at least six official training runs must be offered on three (3) consecutive days. Two additional runs are given for each team member in Doubles (as in Singles) before the first run in Doubles.
- For the Team Relay a single training run should be offered if the gap between the Men's Singles and the Team Relay competition is longer than one (1) day. In exceptional situations it is possible that one training run will be offered for Women's Singles and Doubles participating in the Team Relay.

Competition

Singles consist of four runs over two (2) consecutive days, two for each day. Results are calculated by adding the times of all competition heats together, with the lowest aggregate time winning. At least two heats are needed for a competition. The Jury may decide to cancel one or two of the four heats for any reason.

- Doubles consists of two runs on one (1) day.
- Team Relay consists of a single run for each team sled, made up by Men's Singles, Women's Singles and the Doubles.

Starting Order

Official Training

- 1st training day (Run 1 and Run 2): training by groups according to draw of NFs
 - 2nd training day (Run 3 and Run 4): training by groups in reversed order of NFs
- Note: On 1st and 2nd training days, NOCs with partnership programmes may be placed into the same training group, but the draw within their group will be done by individual NOCs.
- 3rd training day (Run 5 and Run 6): joint training according to new draw (no groupings, all NOCs drawn individually)
 - Each day, in accordance with the draw
 - 1st training run first to last by NOCs.
 - 2nd training run last to first by NOCs.

Competition

Calculation of seeded groups for individual disciplines results from the World Cup point ranking of the three previous World Cup races from a minimum of three different tracks and a minimum of two different nations.

- There will be draws for each seeded group and for the athletes ranked 37th and lower.
- Singles (women and men)
 - 1st run: 1-12 (A), 13-24 (B), 25-36 (C), 37 to last start number
 - 2nd run: 12-1 (A), 24-13 (B), 36-25 (C), last start number to 37
 - 3rd run: 1-last place (according to placing after 2nd run)
 - 4th run: 20th place to 1st place (according to placing after 3rd run)



- Doubles

- 1st run: 1-12 (A), 13-last place (B)

- 2nd run: by reverse order of first run ranking

- Team Relay

- By order of national ranking from the Olympic results in singles and doubles, last to first.

Tie-break Rules

No tie break rules – tied athletes/teams will share the same rank.

Team Captains' Meetings and Draws

The Team Captains' Meetings and Draws will be held at the venue or hotel according to the schedule and FIL rules as follows below.

- 1st TCM will be held on January 31,2022.
- Men's TCM and Draw will be held on February 4,2022.
- Women's TCM and Draw will be held on February 6,2022.
- Doubles and Team Relay TCM and Draw will be held on February 8, 2022

The locations and schedule may be subject to change.

Athletes will be seeded in groups (A: 1-12; B: 13-24; C: 25-36 and 37 to last start number) based on the individual disciplines results from the World Cup point ranking of the three previous World Cup races from a minimum of three different tracks and a minimum of two different nations.



Protests

- Protests must be made in writing and must be dated and signed by the team captain or the team captain's representative or the athlete.
- The protest must be given to a Jury Member and a protest fee of 50 Euros will be paid when the protest is submitted.
- Verbal notification of the intention to submit a protest must be given within 5 minutes and the written protest must be submitted within 10 minutes after the conclusion of the official training, the competition run, or other protest reasons. In case of a disqualification, the written protest must be submitted within 10 minutes after receipt of the report according to § 11, 1.2.7 of the IRO International Luge Regulations 2020 Edition.
- The Jury decides on all protests.

Competition Equipment

- All luge sleds and clothing used during competition must comply with FIL and IOC regulations.
- Luge sleds may be stored and maintained at the National Sliding Centre and Yanqing Olympic Village.

Timing and Scoring

Timing and Scoring is provided by OMEGA in accordance with FIL rules and Olympic Results and Information Services (ORIS).



Awards

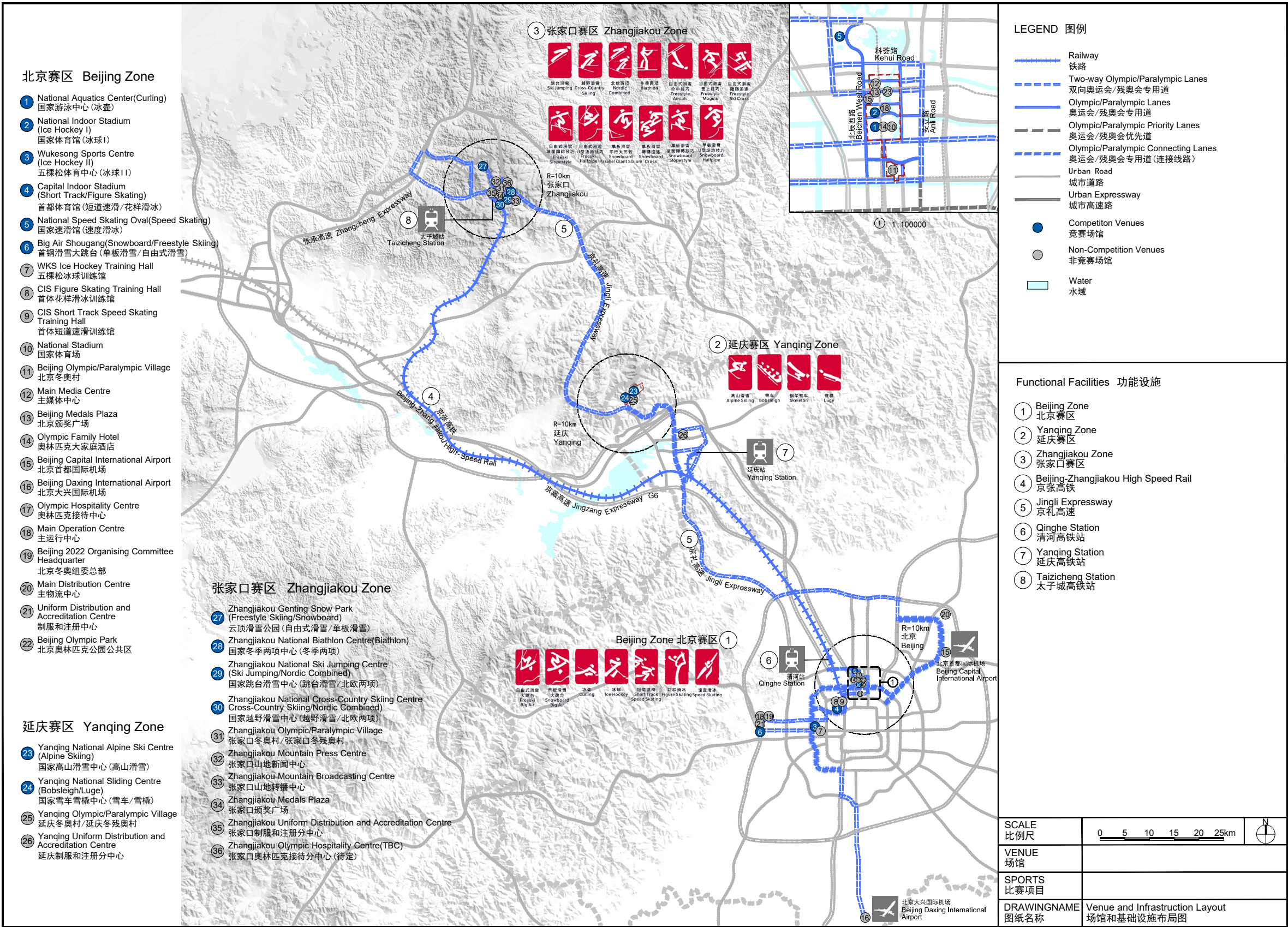
In-venue ceremonies will be taken place immediately following the completion of medal events. The ceremonies will feature the presentation of a gift to each medalist, but will not include the presentation of medals, the raising of flags or playing of the gold medalist's national anthem.

The Victory Ceremonies held at the Medals Plazas features presentations of medals by IOC representatives and commemorative gifts by IF representatives to the medalists, raising the medalist's national flag, and playing the national anthem of the gold medalists. For the events which ends before 16:00, the Victory Ceremonies will be held on the competition day at Beijing Medals Plaza, while for the events which ends after 16:00, the Victory Ceremonies will be held on the day after the competition day at Beijing Medals Plaza. Victory Ceremonies will begin at 19:30 each evening. Medalists and presenting officials should arrive at the Medals Plaza by 18:30.

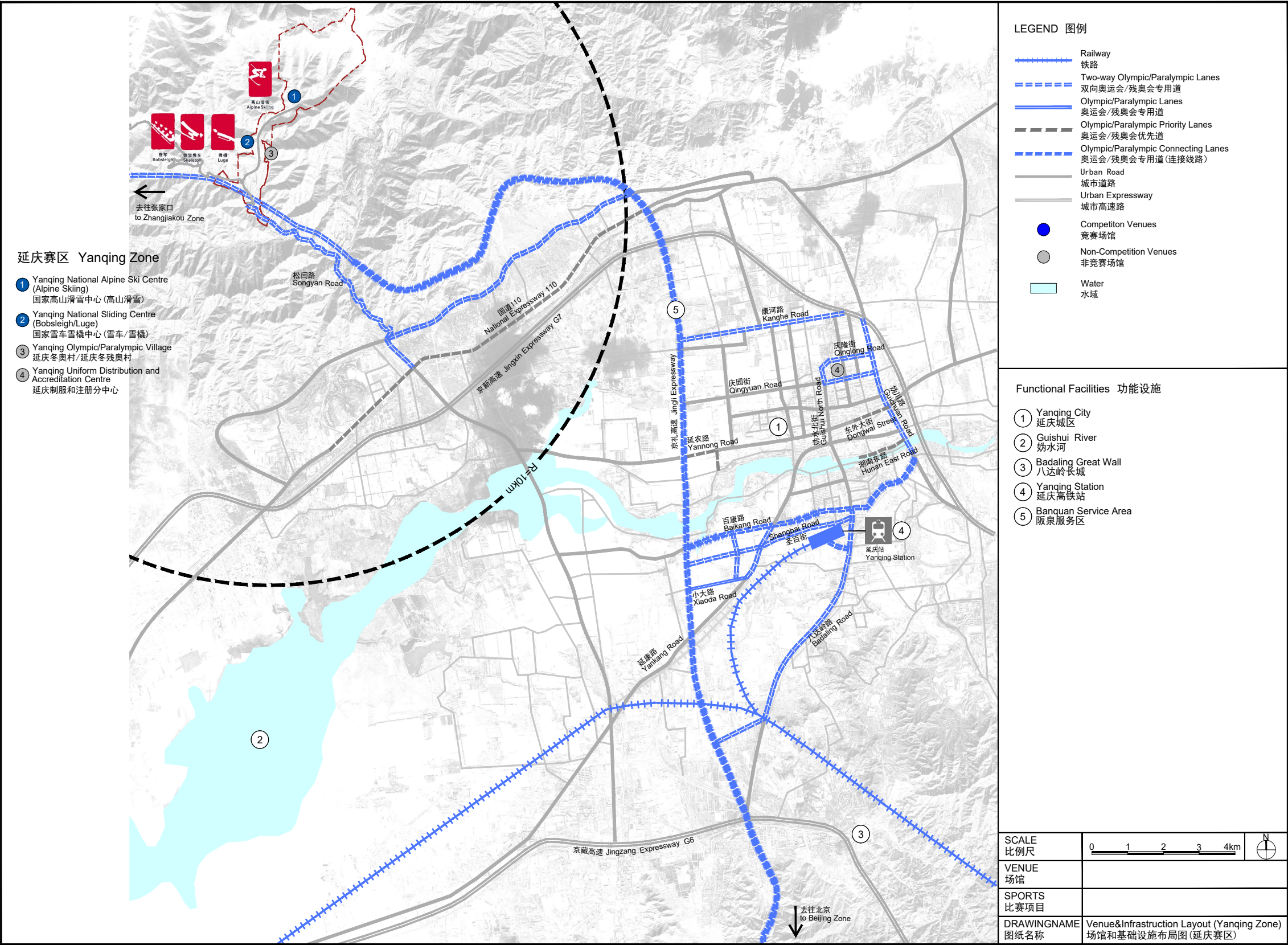
The medalist and the NOC delegate attending Victory Ceremonies should abide by Rule 50 of Olympic Charter. The uniforms of the medalist and team officials must be in line with the IOC's "Guidelines Regarding Authorised Identifications of Beijing 2022". During the ceremony, the OIAC should be hidden from sight. No medalist should have flags, items with logos, souvenirs, cameras, mobile phones or any other items on them in the ceremony area during the ceremony, as this is a breach of Rule 50.

Beijing 2022 Venue and Infrastructure Layout

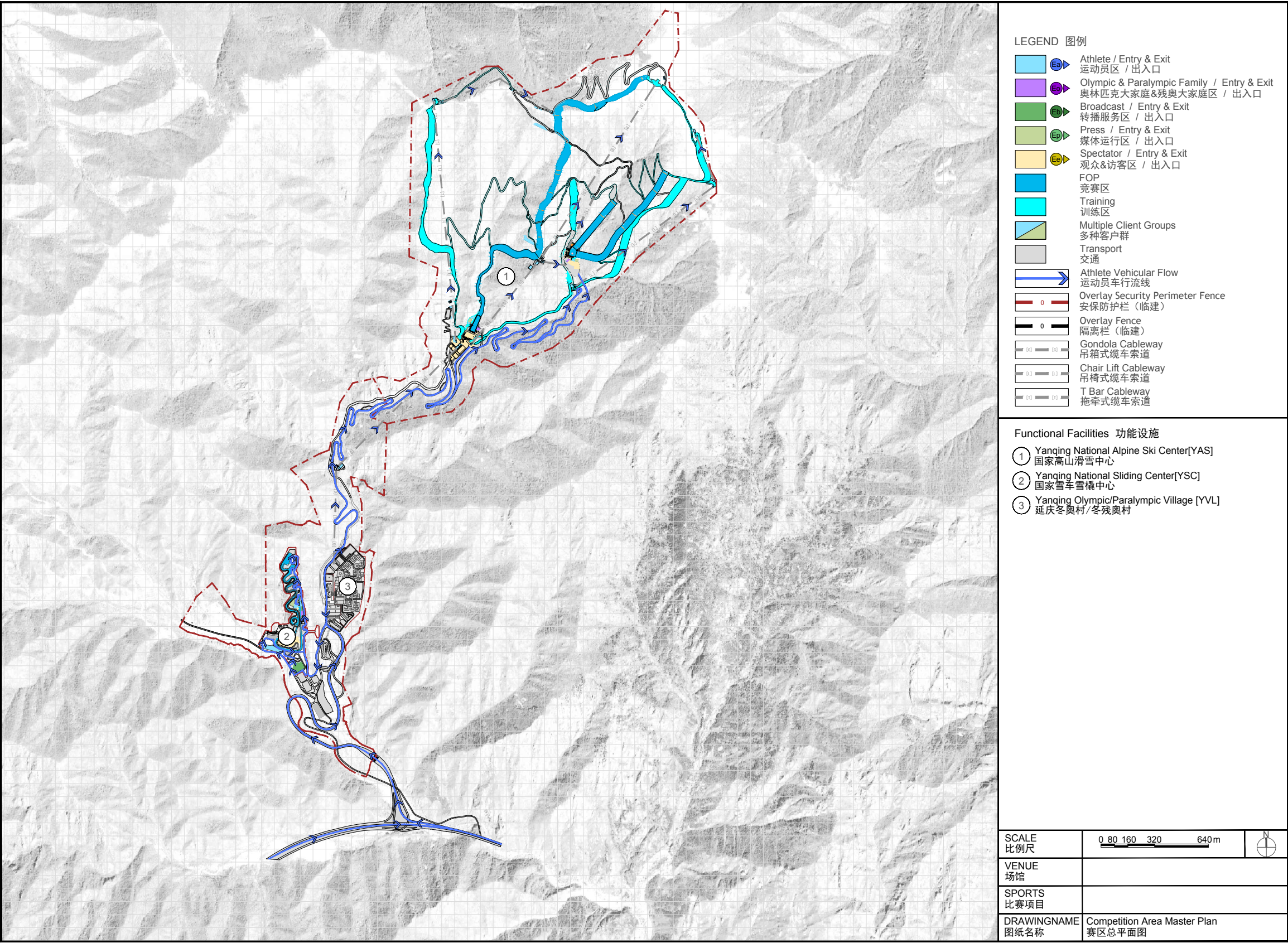
Appendix-Maps



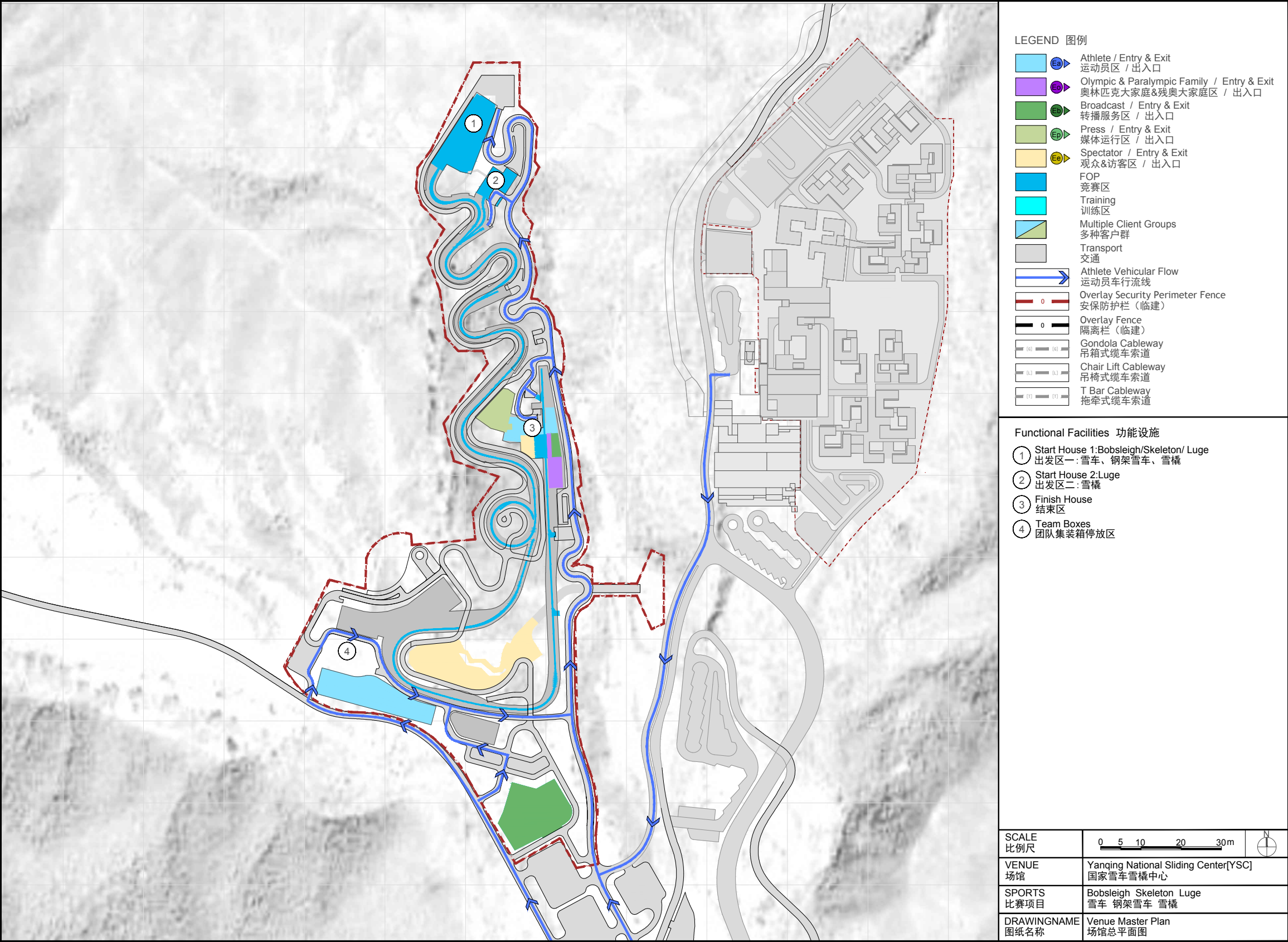
Beijing 2022 Venue and Infrastructure Layout Yanqing Zone



Yanqing Zone Venue Cluster Masterplan



Yanqing National Sliding Centre



Beijing 2022 Olympic Winter Games Competition Schedule Version 7

<div><div>BEIJING 2022™</div><div></div><div>BEIJING 2022™</div></div>																						
Beijing 2022 Olympic Winter Games Competition Schedule Version 7																						
	Sport / Discipline	Day 2 Wednesday 03 Feb.	Day 3 Thursday 04 Feb.	Day 4 Friday 05 Feb.	Day 5 Saturday 06 Feb.	Day 6 Sunday 07 Feb.	Day 7 Monday 08 Feb.	Day 8 Tuesday 09 Feb.	Day 9 Wednesday 10 Feb.	Day 10 Thursday 11 Feb.	Day 11 Friday 12 Feb.	Day 12 Saturday 13 Feb.	Day 13 Sunday 14 Feb.	Day 14 Monday 15 Feb.	Day 15 Tuesday 16 Feb.	Day 16 Wednesday 17 Feb.	Day 17 Thursday 18 Feb.	Day 18 Friday 19 Feb.	Day 19 Saturday 20 Feb.	Day 20 Sunday 21 Feb.	Medals	
National Olympic Stadium				Opening Ceremony																Closing Ceremony		
National Indoor Stadium	Ice Hockey 1		Ice Hockey Preliminary Round 12:10-14:30	Ice Hockey Preliminary Round 12:10-14:30	Ice Hockey Preliminary Round 16:40-19:00		Ice Hockey Preliminary Round 21:10-23:30	Ice Hockey Preliminary Round 21:10-23:30	Ice Hockey Preliminary Round 16:40-19:00 21:10-23:30	Ice Hockey Preliminary Round 12:10-14:30 21:10-23:30	Ice Hockey Preliminary Round 12:10-14:30 21:10-23:30	Ice Hockey Preliminary Round 16:40-19:00 21:10-23:30	Ice Hockey Preliminary Round 16:40-19:00 21:10-23:30	Ice Hockey Preliminary Round 12:10-14:30 21:10-23:30	Ice Hockey Qualification Playoffs 12:10-14:30 21:10-23:30	Ice Hockey Quarterfinals 12:10-14:30 21:10-23:30		Ice Hockey Semifinals 12:10-14:30 21:10-23:30	Ice Hockey Bronze Medal 21:10-00:00	Ice Hockey Gold Medal 12:10-15:00	1	
Wukesong Sports Centre	Ice Hockey 2		Ice Hockey Preliminary Round 12:10-14:30 16:40-19:00 21:10-23:30	Ice Hockey Preliminary Round 12:10-14:30	Ice Hockey Preliminary Round 12:10-14:30 16:40-19:00 21:10-23:30	Ice Hockey Preliminary Round 16:40-19:00 21:10-23:30	Ice Hockey Preliminary Round 21:10-23:30	Ice Hockey Preliminary Round 21:10-23:30		Ice Hockey Preliminary Round 21:10-23:30	Ice Hockey Quarterfinals 12:10-14:30 16:40-19:00 21:10-23:30	Ice Hockey Quarterfinals 12:10-14:30 16:40-19:00 21:10-23:30	Ice Hockey Semifinals 12:10-14:30 21:10-23:30	Ice Hockey Semifinals 12:10-14:30 21:10-23:30	Ice Hockey Qualification Playoffs 12:10-14:30 21:10-23:30	Ice Hockey Quarterfinals 14:00-16:20 19:30-21:50	Ice Hockey Gold Medal 12:10-15:00				1	
National Speed Skating Oval	Speed Skating				Speed Skating 1500 m 16:30-18:05	Speed Skating 5000 m 16:30-18:30	Speed Skating 1000 m 16:30-18:05	Speed Skating 1000 m 16:30-20:05		Speed Skating 2000 m 20:00-21:30	Speed Skating 1000 m 16:00-18:10	Speed Skating Team Pursuit Qual. 1600 m * 16:00-17:50	Speed Skating Team Pursuit Qual. 1600 m * 19:30-21:25		Speed Skating Team Pursuit Finals 14:30-17:20		Speed Skating 1000 m 16:30-18:00	Speed Skating 1000 m 16:30-17:55	Speed Skating Mass Start 15:00-17:40		14	
Capital Indoor Stadium	Short Track Speed Skating				Short Track 1500 m Qual. 1000 m Qual. Mixed Gender Relay * Quarter/Semi/Final 19:00-21:35		Short Track 1500 m * 2000 m Quarter/Semi/Final 19:30-21:05		Short Track 1500 m * 2000 m Quarter/Semi/Final 19:00-21:40		Short Track 1500 m * 2000 m Quarter/Semi/Final 19:00-21:05		Short Track 1500 m Quarter/Semi/Final 19:30-21:00		Short Track 1500 m Quarter/Semi/Final 19:30-21:00	Short Track 1500 m Relay Final 19:30-21:30					9	
	Figure Skating			Figure Skating Team Event Short Program Ice Dance Rhythm Dance 09:30-14:35		Figure Skating Team Event Pairs Free Skating Ice Dance Free Dance 09:30-13:05	Figure Skating Pairs Free Skating Ice Dance Free Dance 10:30-14:00		Figure Skating Ice Dance Rhythm Dance 09:30-13:40	Figure Skating Ice Dance Rhythm Dance 19:00-22:40		Figure Skating Ice Dance Rhythm Dance 19:00-22:40		Figure Skating Ice Dance Rhythm Dance 19:00-22:40	Figure Skating Short Program 18:00-22:25		Figure Skating Free Skating 18:00-22:10	Figure Skating Short Program 18:30-21:45	Figure Skating Pairs Free Skating 19:00-22:05	Figure Skating Ice Dance 12:00-14:30	5	
National Aquatics Centre	Curling	Curling Mixed Doubles Round Robin MD #1 20:05-22:00	Curling Mixed Doubles Round Robin MD #2 09:05-11:00 MD #3 14:05-16:00 MD #4 20:05-22:00	Curling Mixed Doubles Round Robin MD #5 08:30-10:30 MD #6 13:30-15:30	Curling Mixed Doubles Round Robin MD #7 09:05-11:00 MD #8 14:05-16:00 MD #9 20:05-22:00	Curling Mixed Doubles Round Robin MD #10 09:05-11:00 MD #11 14:05-16:00 MD #12 20:05-22:00	Curling Mixed Doubles Round Robin MD #13 09:05-11:00 MD #14 14:05-16:00 MD Semifinals 20:00-22:00	Curling Mixed Doubles Round Robin MD #15 09:05-11:00 MD #16 14:05-16:00 MD #17 20:05-22:00	Curling Mixed Doubles Round Robin MD #18 09:05-11:00 MD #19 14:05-16:00 MD #20 20:05-22:00	Curling Mixed Doubles Round Robin MD #21 09:05-11:00 MD #22 14:05-16:00 MD #23 20:05-22:00	Curling Mixed Doubles Round Robin MD #24 09:05-11:00 MD #25 14:05-16:00 MD #26 20:05-22:00	Curling Mixed Doubles Round Robin MD #27 09:05-11:00 MD #28 14:05-16:00 MD #29 20:05-22:00	Curling Mixed Doubles Round Robin MD #30 09:05-11:00 MD #31 14:05-16:00 MD #32 20:05-22:00	Curling Mixed Doubles Round Robin MD #33 09:05-11:00 MD #34 14:05-16:00 MD #35 20:05-22:00	Curling Mixed Doubles Round Robin MD #36 09:05-11:00 MD #37 14:05-16:00 MD #38 20:05-22:00	Curling Mixed Doubles Round Robin MD #39 09:05-11:00 MD #40 14:05-16:00 MD Semifinal 20:05-23:00	Curling Mixed Doubles Round Robin MD #41 09:05-11:00 MD #42 14:05-16:00 MD Semifinal 20:05-23:00	Curling Mixed Doubles Round Robin MD #43 09:05-11:00 MD #44 14:05-16:00 MD Semifinal 20:05-23:00	Curling Mixed Doubles Round Robin MD #45 09:05-11:00 MD #46 14:05-16:00 MD Semifinal 20:05-23:00	Curling Mixed Doubles Round Robin MD #47 09:05-11:00 MD #48 14:05-16:00 MD Semifinal 20:05-23:00	Curling Mixed Doubles Round Robin MD #49 09:05-11:00 MD #50 14:05-16:00 MD Semifinal 20:05-23:00	3
Big Air Shougang	Snowboard & Freestyle Skiing Big Air						Freestyle Skiing Freestyle Big Air Qual. 09:30-11:45 Freestyle Big Air Qual. 13:30-15:45	Freestyle Skiing Freestyle Big Air Qual. 09:30-11:45 Freestyle Big Air Qual. 13:30-15:45	Freestyle Skiing Freestyle Big Air Qual. 09:30-11:45 Freestyle Big Air Qual. 13:30-15:45					Snowboard Big Air Qual. 09:30-11:45 Big Air Qual. 13:30-15:45	Snowboard Big Air Qual. 09:30-11:45 Big Air Qual. 13:30-15:45						4	
Yanqing National Alpine Skiing Centre	Alpine Skiing Speed Events Downhill Super-G Alpine Combined					Alpine Skiing 11:15-11:45		Alpine Skiing 11:00-11:25		Alpine Skiing Alpine Combined Downhill segment 10:30-12:45		Alpine Skiing 11:00-11:25			Alpine Skiing 11:00-11:10		Alpine Skiing Alpine Combined Downhill segment 10:30-12:00				4	
	Alpine Skiing Technical Events Giant Slalom Slalom Team Event Alpine Combined						Alpine Skiing Giant Slalom Run 11:00-11:50 Run 11:13:45-15:45		Alpine Skiing Slalom Run 11:00-11:50 Run 11:13:45-15:45	Alpine Skiing Alpine Combined Slalom segment 14:30-16:25		Alpine Skiing Giant Slalom Run 11:00-11:50 Run 11:13:45-15:45		Alpine Skiing Alpine Combined Slalom segment 14:00-16:25		Alpine Skiing Alpine Combined Slalom segment 14:00-16:25		Alpine Skiing Alpine Combined Slalom segment 14:00-16:25	Alpine Skiing Team Event 12:00-13:10		7	
Yanqing National Sliding Centre	Bobsleigh												Bobsleigh Monobob Heat 1 & 2 09:30-11:45	Bobsleigh Monobob Heat 3 & 4 09:30-12:00 Two-Man Heat 1 & 2 20:05-22:45	Bobsleigh Two-Man Heat 3 & 4 20:05-22:45		Bobsleigh Two-Man Heat 1 & 2 20:00-22:15	Bobsleigh Four-Man Heat 1 & 2 09:30-12:00 Two-Man Heat 3 & 4 20:05-22:45	Bobsleigh Four-Man Heat 3 & 4 09:30-12:25		4	
	Skeleton								Skeleton Heat 1 & 2 09:30-11:55	Skeleton Heat 3 & 4 09:30-11:55	Skeleton Heat 1 & 2 09:30-11:55	Skeleton Heat 3 & 4 09:30-11:55									2	
	Luge				Luge Heat 1 & 2 19:10-22:00	Luge Heat 3 & 4 19:10-22:10	Luge Heat 1 & 2 19:10-22:40	Luge Heat 3 & 4 19:10-22:30	Luge Downhill 20:20-22:25	Luge Team Relay 21:30-22:50											4	
Zhangjiakou National Ski Jumping Centre	Ski Jumping Nordic Combined				Ski Jumping Individual NH Qual. 14:20-15:30 Individual NH Final 18:45-20:30	Ski Jumping Downhill Qual. 15:00-21:05	Mixed Team NH 20:40-22:00		Nordic Combined Individual NH 16:00-16:55		Ski Jumping Individual LH Qual. 19:00-20:30	Ski Jumping Individual LH Final 20:00-21:05		Ski Jumping Team LH 17:00-21:05	Nordic Combined Individual LH 16:00-16:55		Nordic Combined Team LH 16:00-16:55				5	
Zhangjiakou National Cross-Country Skiing Centre	Cross-Country Skiing Nordic Combined				Cross-Country Skiing 7.5 km + 7.5 km Skateathlon 15:45-16:45	Cross-Country Skiing 15 km + 15 km Skateathlon 15:45-16:45		Cross-Country Skiing Team Sprint Free Qual. 16:00-17:35 Final 18:30-20:20	Nordic Combined Individual 15 km 19:00-19:55	Cross-Country Skiing 15 km Classic 15:00-16:35	Cross-Country Skiing 15 km Classic 15:00-16:45	Cross-Country Skiing 15 km Relay Classic/Free 16:00-16:55	Cross-Country Skiing 15 km Relay Classic/Free 16:00-16:55		Nordic Combined Individual 15 km 19:00-19:55	Cross-Country Skiing Team Sprint Classic Qual. 17:00-18:50 Final 19:00-20:15	Nordic Combined Team Sprint 19:00-20:15		Cross-Country Skiing 15 km Mass Start Free 14:00-16:45	Cross-Country Skiing 15 km Mass Start Free 15:00-17:00	15	
Zhangjiakou National Biathlon Centre	Biathlon				Biathlon Mixed Relay 17:00-18:30		Biathlon 10 km Individual 17:00-19:00	Biathlon 20 km Individual 16:30-18:35		Biathlon 10 km Sprint 17:00-18:30	Biathlon 10 km Sprint 17:00-18:35	Biathlon 10 km Pursuit 17:00-18:00 12 km Pursuit 18:45-19:45		Biathlon 10 km Relay 17:00-18:35	Biathlon 10 km Relay 17:00-18:35		Biathlon 10 km Relay 17:00-18:35	Biathlon 10 km Relay 17:00-18:35	Biathlon 10 km Mass Start 17:00-18:55	Biathlon 10 km Mass Start 17:00-18:55	11	
Zhangjiakou Genting Snow Park	Snowboard Parallel Giant Slalom Cross Mixed Team Freestyle Skiing Ski Cross							Snowboard Parallel Giant Slalom Qual. 10:40-12:30 Final 14:30-16:10	Snowboard Cross Qual. 14:00-12:30 Final 14:30-16:00	Snowboard Cross Qual. 14:00-12:30 Final 14:30-16:00		Snowboard Mixed Team Snowboard Cross 10:00-11:20				Freestyle Skiing Ski Cross Qual. 11:30-12:15 Final 14:00-15:20	Freestyle Skiing Ski Cross Qual. 11:30-12:15 Final 14:00-15:20				7	
	Snowboard Slopestyle Halfpipe Freestyle Skiing Slopestyle Halfpipe				Snowboard Slopestyle Qual. 10:45-12:45	Snowboard Slopestyle Qual. 10:45-12:45	Snowboard Slopestyle Final 12:00-13:40		Snowboard Slopestyle Qual. 12:30-14:30	Snowboard Slopestyle Qual. 12:30-14:30	Snowboard Slopestyle Qual. 12:30-14:30	Snowboard Slopestyle Qual. 12:30-14:30		Freestyle Skiing Slopestyle Qual. 10:00-12:00	Freestyle Skiing Slopestyle Qual. 10:00-12:00	Freestyle Skiing Slopestyle Qual. 10:00-12:00	Freestyle Skiing Slopestyle Qual. 10:00-12:00	Freestyle Skiing Slopestyle Qual. 10:00-12:00	Freestyle Skiing Slopestyle Qual. 10:00-12:00	Freestyle Skiing Slopestyle Qual. 10:00-12:00	8	
	Freestyle Skiing Moguls Aerials Aerials Mixed Team		Freestyle Skiing Moguls Qual. #1 18:00-18:45 Moguls Qual. #2 19:00-19:30 Qual. #3 19:45-20:30		Freestyle Skiing Moguls Qual. #1 18:00-18:45 Moguls Qual. #2 19:00-19:30 Qual. #3 19:45-20:30	Freestyle Skiing Moguls Qual. #1 18:00-18:45 Moguls Qual. #2 19:00-19:30 Qual. #3 19:45-20:30			Freestyle Skiing Mixed Team Aerials Final 19:00-20:35				Freestyle Skiing Aerials Qual. 19:00-20:15	Freestyle Skiing Aerials Final 19:00-20:35	Freestyle Skiing Aerials Qual. 19:00-20:15	Freestyle Skiing Aerials Final 19:00-20:35					5	

Note: all information in this schedule is subject to change.

